



This manual covers the model shown below

NA Model	EU Model	Voltage	Description
11676250	N/A	100~240V	Bottle/Tube Roller US version
11676251	15376617	100~240V	Bottle/Tube Roller Export Model



Before using this product, read this entire operation manual carefully. Users should follow all of the operational guidelines contained in this manual and take all necessary safety precautions while using this product. Failure to follow these guidelines could result in potentially irreparable bodily harm and/or property damage.

Caution all internal adjustments and maintenance must be performed by qualified service personnel.

Material in this manual is for information purposes only. Fisher Scientific is committed to a continuing program of product development and improvement, and reserves the right to change information, such as specifications, appearance, and dimensions, described in this document without notice. Fisher Scientific makes no representations or warranties with respect to this manual. In no event shall Fisher Scientific be held liable for any damages, direct or incidental, arising out of or related to the use of this manual.

No part of this manual may be reproduced or transmitted in any form or by any means, including photocopying, recording, or using information storage and retrieval systems, for any purpose other than the purchaser's own use, without the express written permission of the manufacturer.

Any other product names and services identified in this manual are trademarks or registered trademarks of their respective owners. No such use, or the use of any trade name, is intended to convey endorsement or other affiliation with Fisher Scientific.

©2017 Fisher Scientific. All rights reserved.

Contents

Section 1 Unpacking and Installation	4
Packing List	4
Installation	4
<hr/>	
Section 2 Overview	6
Overview	6
Specifications	6
<hr/>	
Section 3 Operation	7
Interface Instructions	7
Control Box Instructions	7
<hr/>	
Section 4 Troubleshooting	8
<hr/>	
Section 5 Optional Accessories/Spare Parts	9
<hr/>	
Section 6 Warranty	10
<hr/>	

Section 1 Unpacking and Installation

When unpacking, follow the steps below.

1. Unpack and inspect for any damage that may have occurred during shipping. Call the seller if damage is found.

2. Verify contents against packing list and call the seller if anything is missing.
3. Place the unit on level and sturdy surface to avoid vibration and noise.

4. Check if the specified instrument voltage is identical with local power supply before powering on.

Packing List

Description		NA Cat. NO.	EU Cat. NO.	Qty	Remark
Bottle\Tube Roller		11676250 US plug 11676251 Intl plug	15376617 Intl plug	1	
Roller		11676252	15386617	6	
Power cables				1	
Operation Manual				1	
O-Ring (23.5X3.55mm)		N/A	15396617	20	
O-Ring (13.2X2.65mm)		N/A	15306627	20	
Stacking Kit (Optional)	Stacking Rods	11676255		4	
	Knob			4	
	Allen Wrench			1	

Installation

1. Control box installation

This unit is equipped with a separate control box. Fasten the nut on the connection plug of control box to the unit.

Note: Keys on the panel of the unit will become invalid when control box is connected. One control box controls one unit only. ▲

2. Roller bars removal and installation

Roller bars can be removed and installed for different sized tubes.

2.1 Roller bars removal

Counterclockwise twist the knob to be loose on the unit end (see Figure 1-1) and then uplift the pressure sheet-metal. Uplift the roller bar (see Figure 1-2) and remove it. Press the sheet metal to the original position and clockwise twist the knob for fastening.

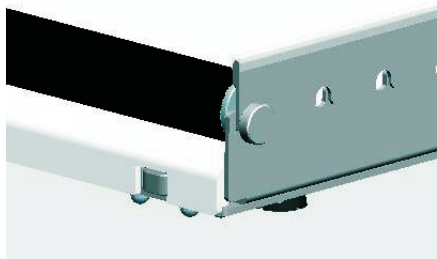


Figure 1-1. Loosen the Knob

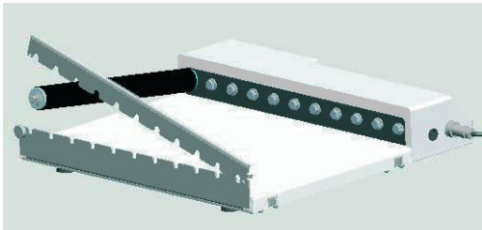


Figure 1-2. Lift Roller Bar

2.2 Roller bars installation

Counterclockwise twist the knob to be loose on the unit end (see Figure 1-1) and then uplift the pressure sheet-metal. Aim hexagon hole of roller at hexagon shaft of the unit and press the other head into semicircle orifice. Press the sheet metal to the knob position and clockwise twist the knob for fastening.

3. O-Rings

When rolling test tubes, tubes may roll off the bars due to the larger outer diameter of the tube cap. Place o-rings on the other end of the tube (see Figure1-3) to prevent the tube from falling off. Two o-rings for each tube are recommended.



Figure 1-3. O-rings

4. Installation for stacked units

For stacking two units, optional accessories are necessary. The two units can be stacked together.

- a. Loosen the inner hexagon screw on the bottom of the unit, pull the round head of the inner hexagon screw out as the arrow direction (see Figure 1-4) until a support base is pulled out (see Figure 1-5), then tighten the inner hexagon screw. Repeat Step a for other three support bases to be extended.

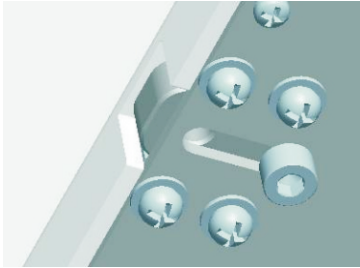


Figure 1-4. Loosen Inner Hexagon Screw

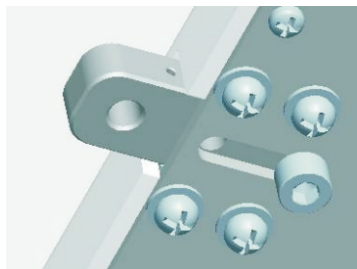


Figure 1-5. Support Base Out

- b. Locate the four stainless pillars in the stacking accessories. Screw the head with the M5 screw thread into extended support base in Step a (see Figure 1-6).

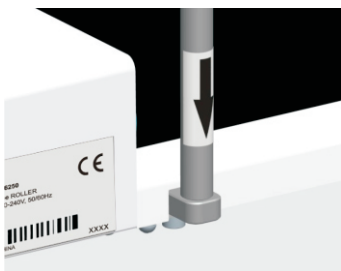


Figure 1-6. Pillar

- c. Screw the other head with M4 screw thread into support base hole of the stacked unit and fasten the knob (see Figure 1-7). Repeat Step c to install remaining three support bases (see Figure 1-8).

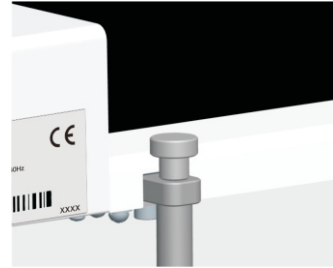


Figure 1-7. Tighten Knob after Installation



Figure 1-8. 4 Pillars into Support Bases

Section 2 Overview

Overview

- Wide speed range: 0.5-80 rpm
- Timing function (control box connected)
- Remote control (control box connected)
- Stackable function

Specifications

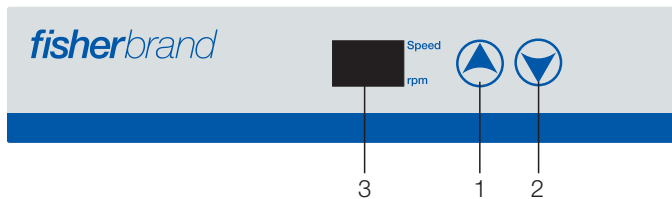
Description	NA Cat. No.	NA/EU Cat. No.
Bottle\Tube Roller	11676250 US plug	11676251 /15376617 Intl plug
Roller Bars	6	
Roller Speed	0.5~80rpm	
Roller Bars Dimensions	Ø28mm×259mm	
Available Tubes or Bottles Max.	Ø120mm bottles; tubes	
Dimensions(W×D×H)	360mm×402mm×72mm	
Timing Range	0~999min or continuous run	
Max. Load	6.5Kg	
Power Requirement	10W	
Ambient Temperature	4℃~60℃	
Relative Humidity	≤95%	
Net Weight	6.5Kg	
Stacking Function	Optional	
Power Supply	AC100~240V, 50~60Hz	

Notice

- Use the unit in specified environment.
- Verify specified instrument voltage is identical with local power supply.
- DO NOT move the unit while in operation.
- DO NOT use to mix flammable or volatile liquid or operate the unit under hazardous condition.

Section 3 Operation

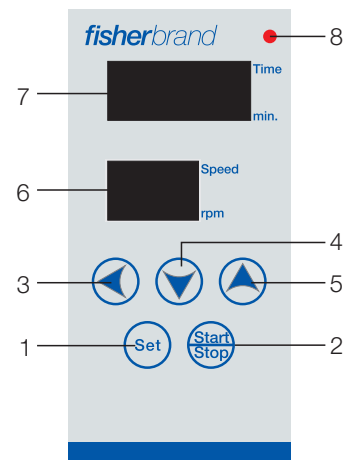
Interface Instructions



1. “↑” : To increase value of roller speed.
2. “↓” : To decrease value of roller speed.
3. Speed display: Show current speed of roller.

The speed of the Mini Roller will drop to 0 RPM when the down arrow key and up arrow key are pressed simultaneously.

Control Box Instructions







1. To set value of time and speed.
 2. To start or stop the unit.
 3. To move the cursor.
 4. To decrease value. Hold for 3 seconds to quickly decrease the value.
 5. To increase value. Hold for 3 seconds to quickly increase the value.
 6. Displays current roller speed.
 7. Displays remaining hours.
- When it reads “00”, Continuous working Mode is activated.
- Note:** Timing function is deactivated when the unit is in Continuous working Mode.
8. Power Indicator.

Section 4 Troubleshooting

Error	Cause	Solution
Unit does not start	Power cable not connected	Check that power cable is firmly plugged into wall outlet
	Power supply	Check that cable is correctly installed into the unit
	Control box has been connected	Remote control box from unit
No display	Power failure	Ensure unit is powered on
	Time cycle completed	Repeat run
LED light on, unit not working	Overloaded	Check and repeat run
Not-responsive keypad	Control box is connected	Remote control box

Section 5 Optional Accessory List

Description	NA Cat. No.	EU Cat. No.	Dimensions	Max. Qty	Figure
Additional Rollers	11676252	15386617	Φ 27×264mm (2pcs/pack)	11	
O-Ring	N/A	15396617	Φ 23.5X3.55mm (20pcs/pack)	20	
O-Ring	N/A	15306627	Φ 13.2X2.65mm (20pcs/pack)	20	
Stacking Kit	11676255	15316627	Φ 12×256mm (4pcs/pack)	4	
Remote Control	11676256	15326627	132×132×52mm	1	

Section 6 Warranty

When used in laboratory conditions and according to these operation instructions and maintenance, this product is warranted for 24 months against defective materials or workmanship. The 24 month warranty period begins from the delivery date of this product.

For product quality or performance issues, contact Fisher Scientific Customer Service.

North America

United States
1-800-766-7000
fishersci.com

Canada
1-800-234-7437
fishersci.ca

Europe

Austria:
+43(0)800-20 88 40
at.fishersci.com

Belgium:
+32(0)56 260 260
be.fishersci.com

Denmark:
+45 70 27 99 20
fishersci.dk

Germany:
+49(0)180 5258221
de.fishersci.com

Ireland:
+959(0)1 885 5854
ie.fishersci.com

Italy:
+39 02 950 59 478
it.fishersci.com

Finland:
+358(0)9 8027 6280
fishersci.fi

France:
+33(0)388 67 14 14
fishersci.fr

Netherlands:
+31(0)20 4887 70 00
nl.fishersci.com

Norway:
+47 22 95 59 59
fishersci.no

Portugal:
+351 21 425 33 50
pt.fishersci.com

Spain:
+34 002 239 303
es.fishersci.com

Sweden:
+46 31- 68 94 30
fishersci.se

Switzerland:
+41(0)56 618 41 11
ch.fishersci.com

UK:
+44(1)1509 555 500
fisher.co.uk

Find out more at **fishersci.com**